



TIER[®]

Mechanically Fastened Stone Cladding System

Natural Stone **Made Simple**



TIER® ULTRA

A revolution in natural stone. Faster to install and more cost-effective than adhesive or scratch and adhered stone systems.



WHY USE TIER®?



QUALITY



FAST



NATURAL



COLOUR-FAST



SIMPLE

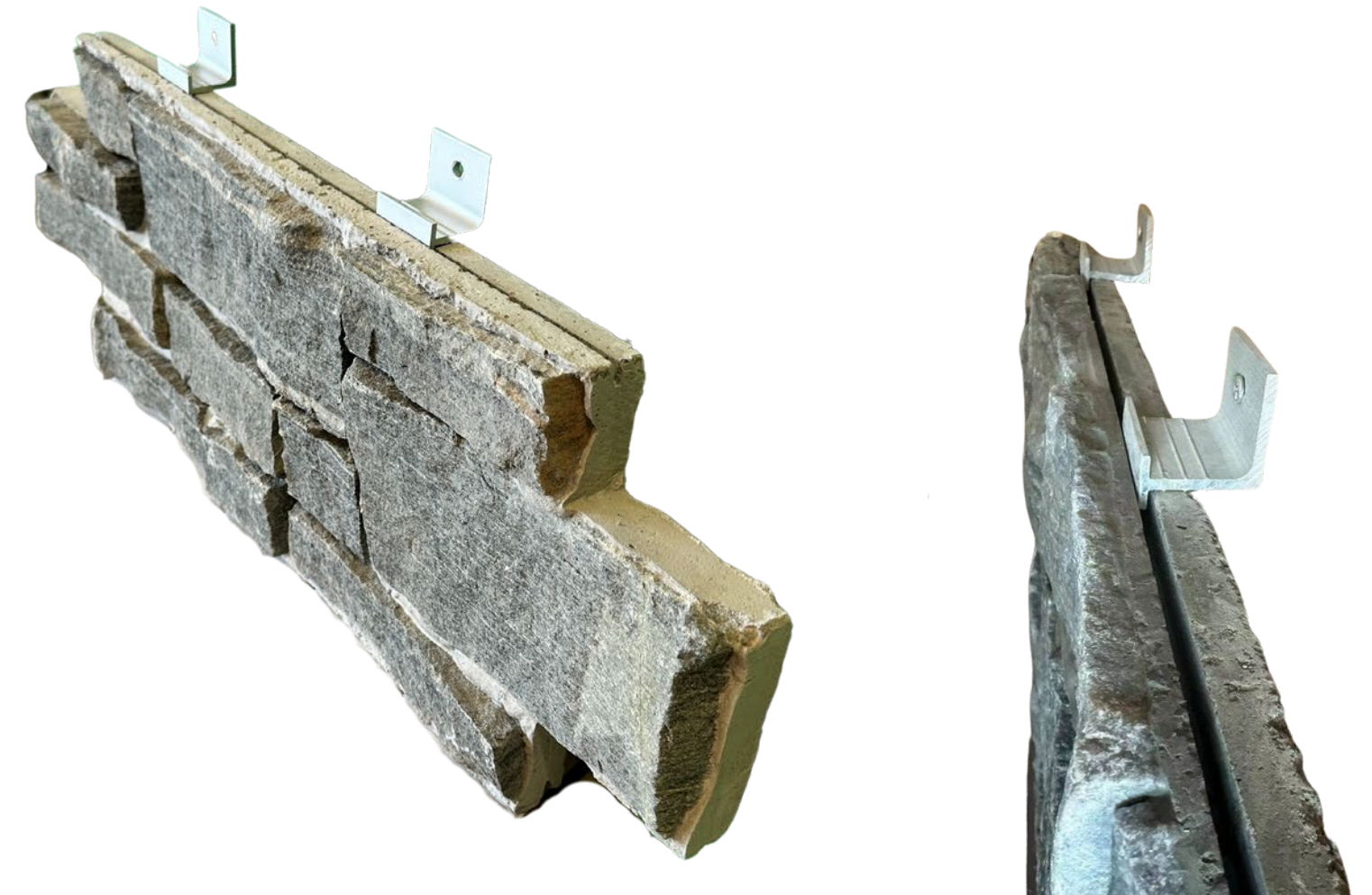


DURABLE

TIER® ULTRA

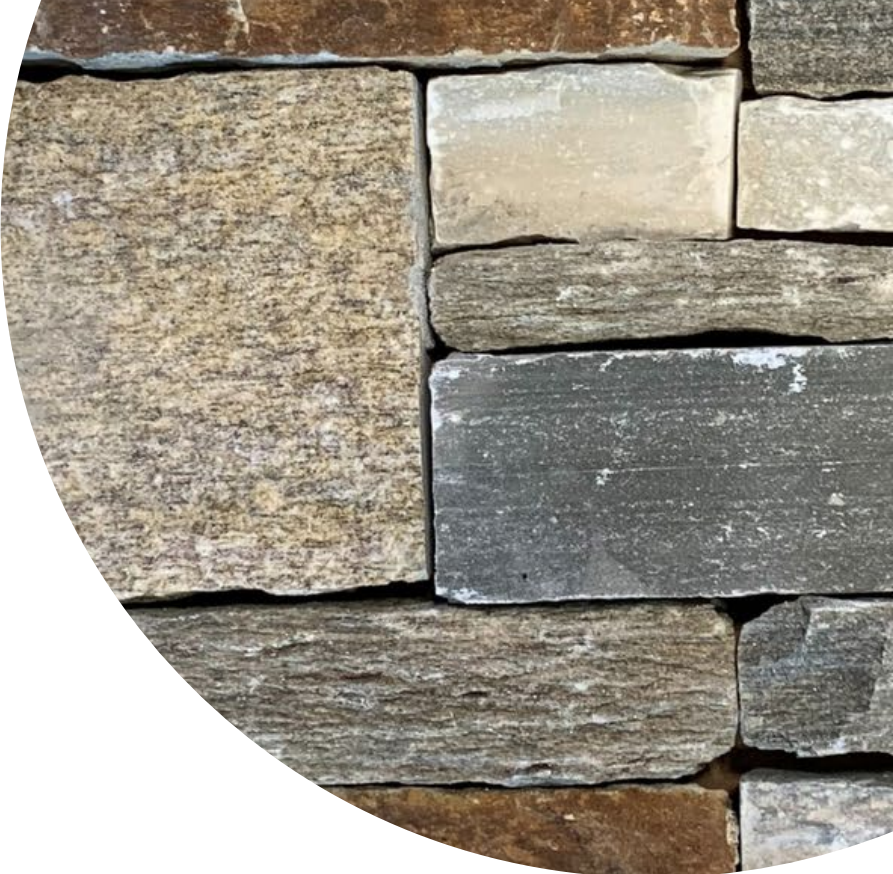
From new construction to remodelling, interior or exterior feature walls, the TIER® mechanically fastened Stone Cladding System offers high-quality, efficient and versatile solutions.

- Constructed from natural stone
- One panel, three installation methods: mechanically fastened, mortared and a combination of mechanically fastened and mortared.
- ULTRA panel shape eliminates horizontal + vertical lines
- Aluminium fixing brackets with flexible fixing position
- No cutting onsite for brackets
- High tensile strength concrete back (6000 psi)
- < 75 kg/sqm = classified as lightweight veneer
- 180% faster to install than loose stone
- 0.95cm rain screen to ensure water drainage and wall ventilation
- Can be installed wet/dry – hot/cold
- Installed by all sub-trade labour



TIER® ULTRA

Product Components



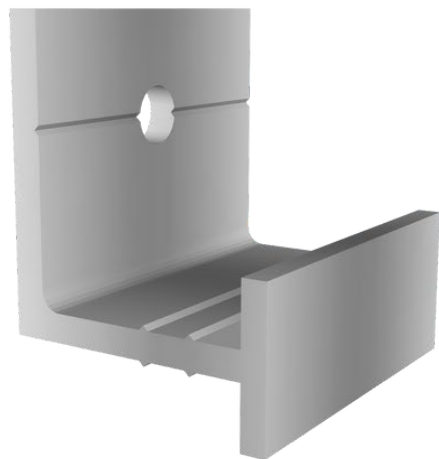
1



2



3



4

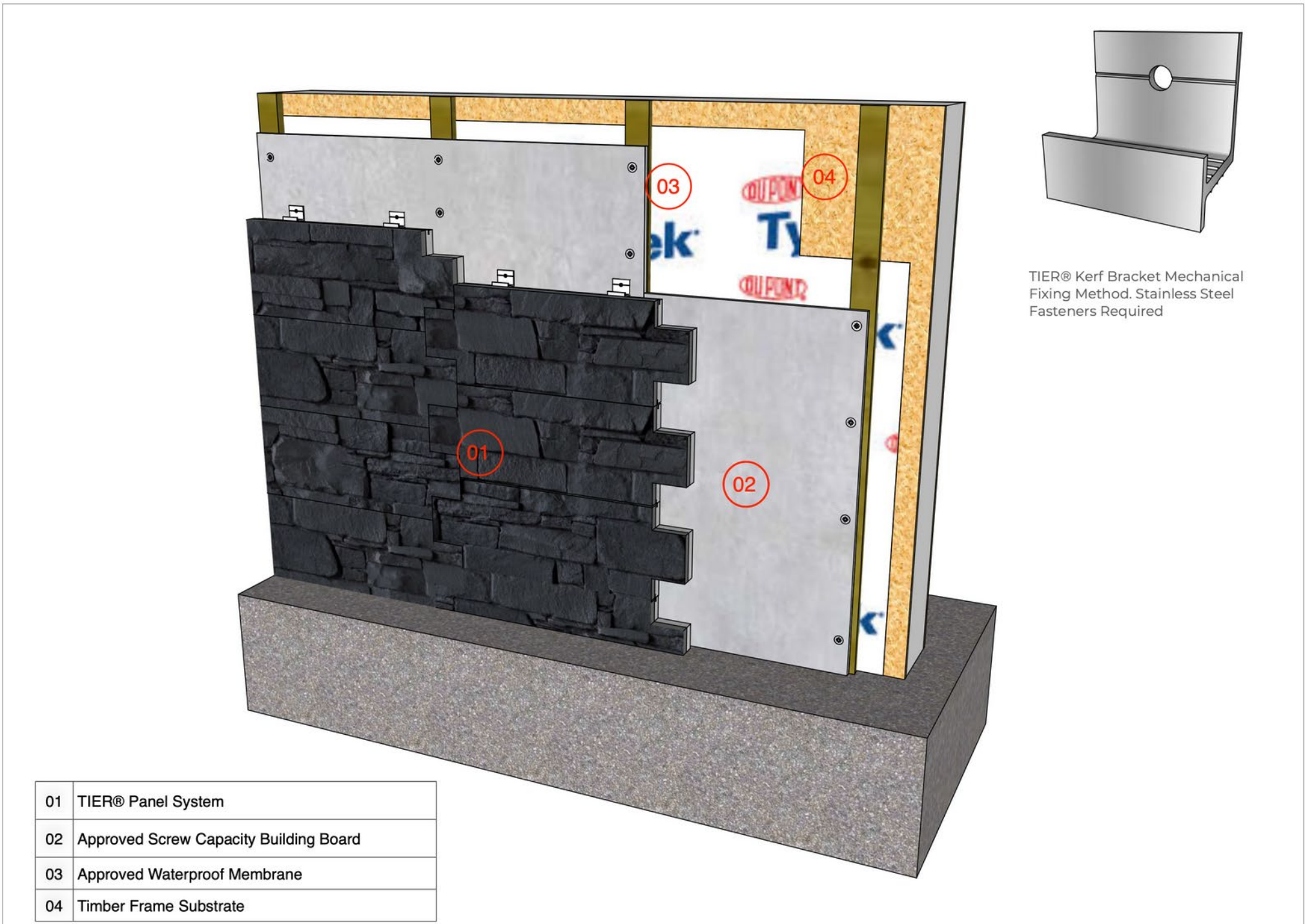
- 1 Flats
- 2 Starter Strips
- 3 Corners
- 4 Brackets

Black Slate



TIER® ULTRA

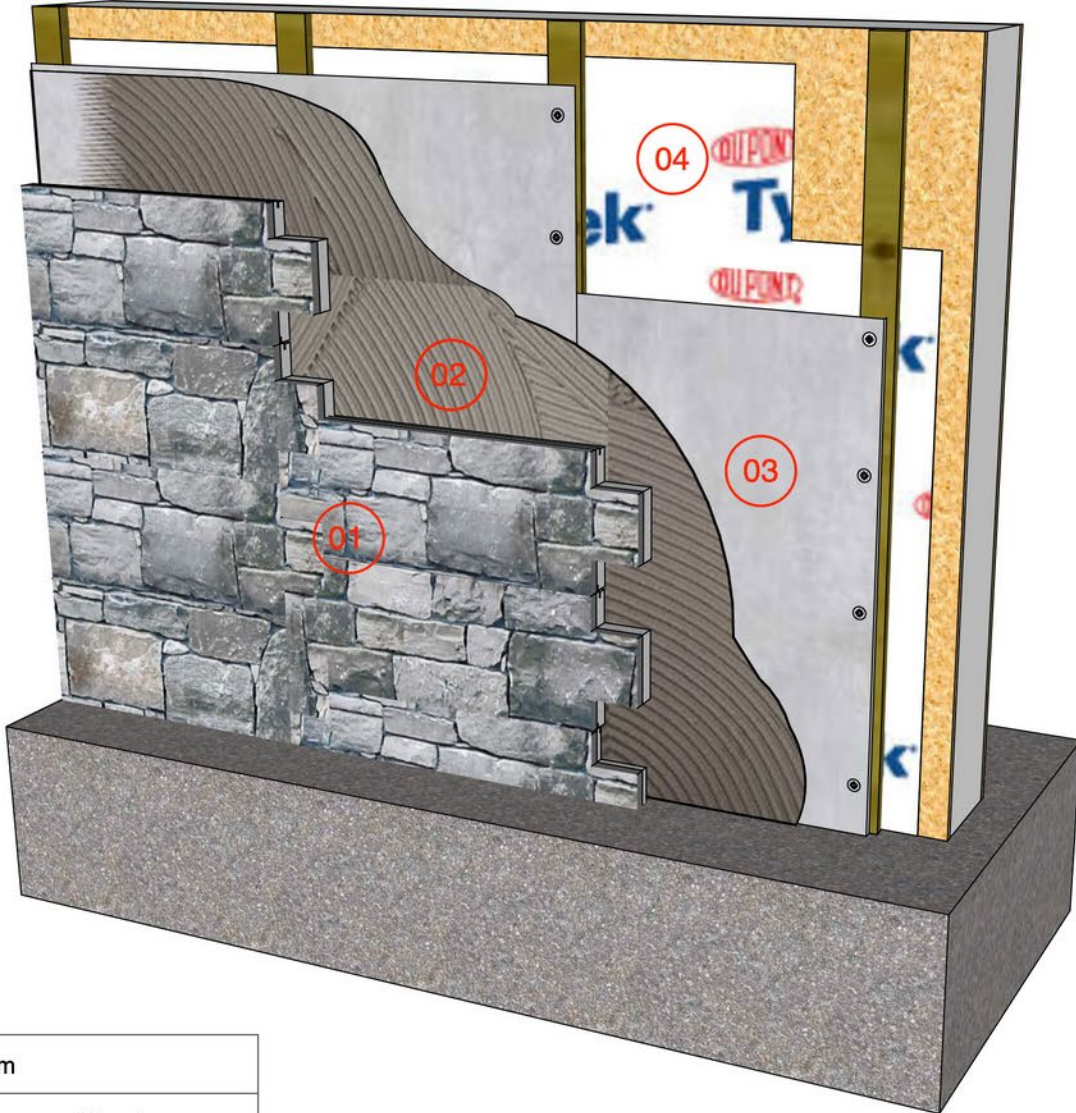
Technical Drawings



Mechanical Install Timber Frame

TIER® ULTRA

Technical Drawings

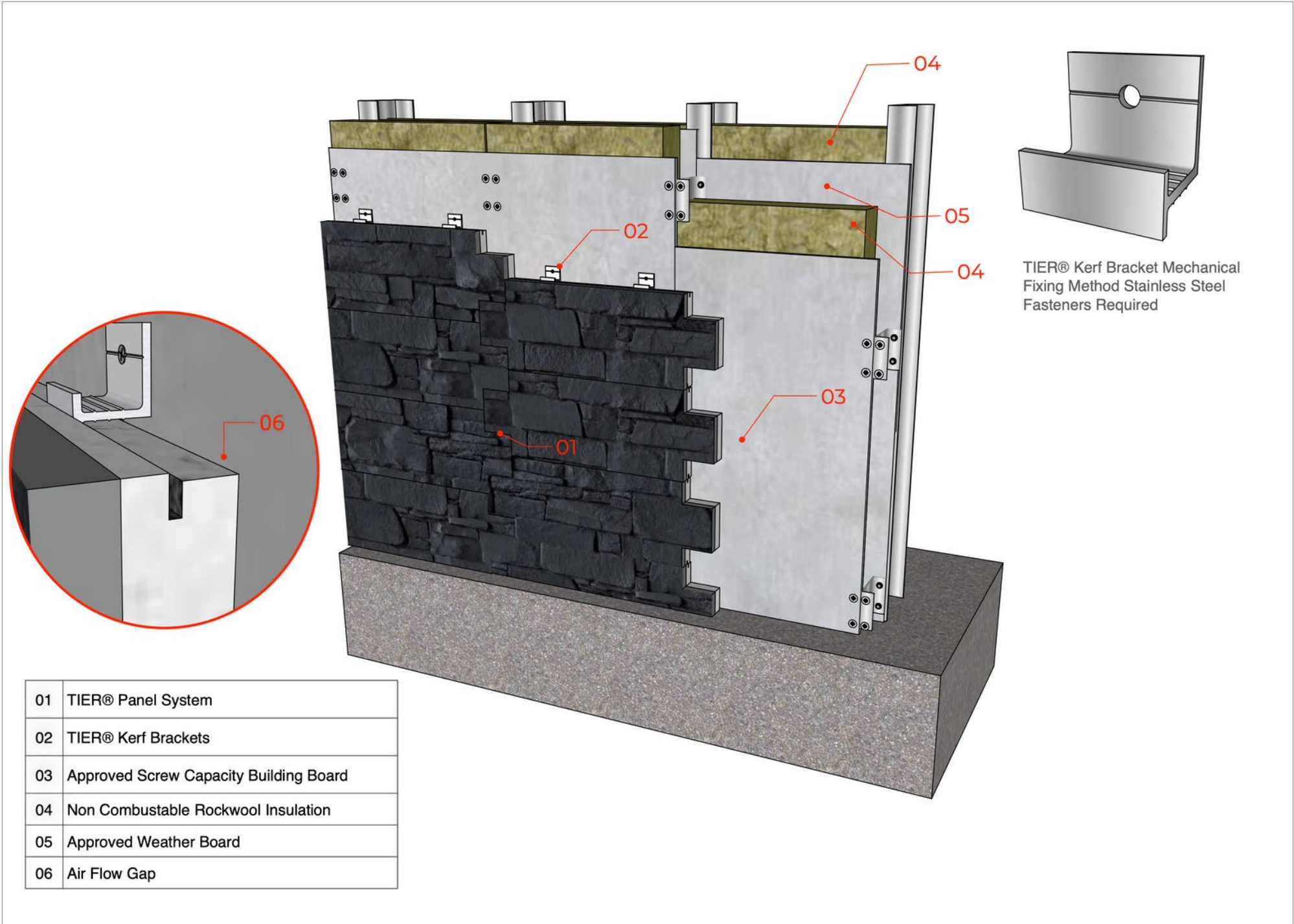


01	TIER® Panel System
02	TIER® High Performance Adhesive
03	Approved Building Board
04	Water Proof Membrane

Adhesive Method

TIER® ULTRA

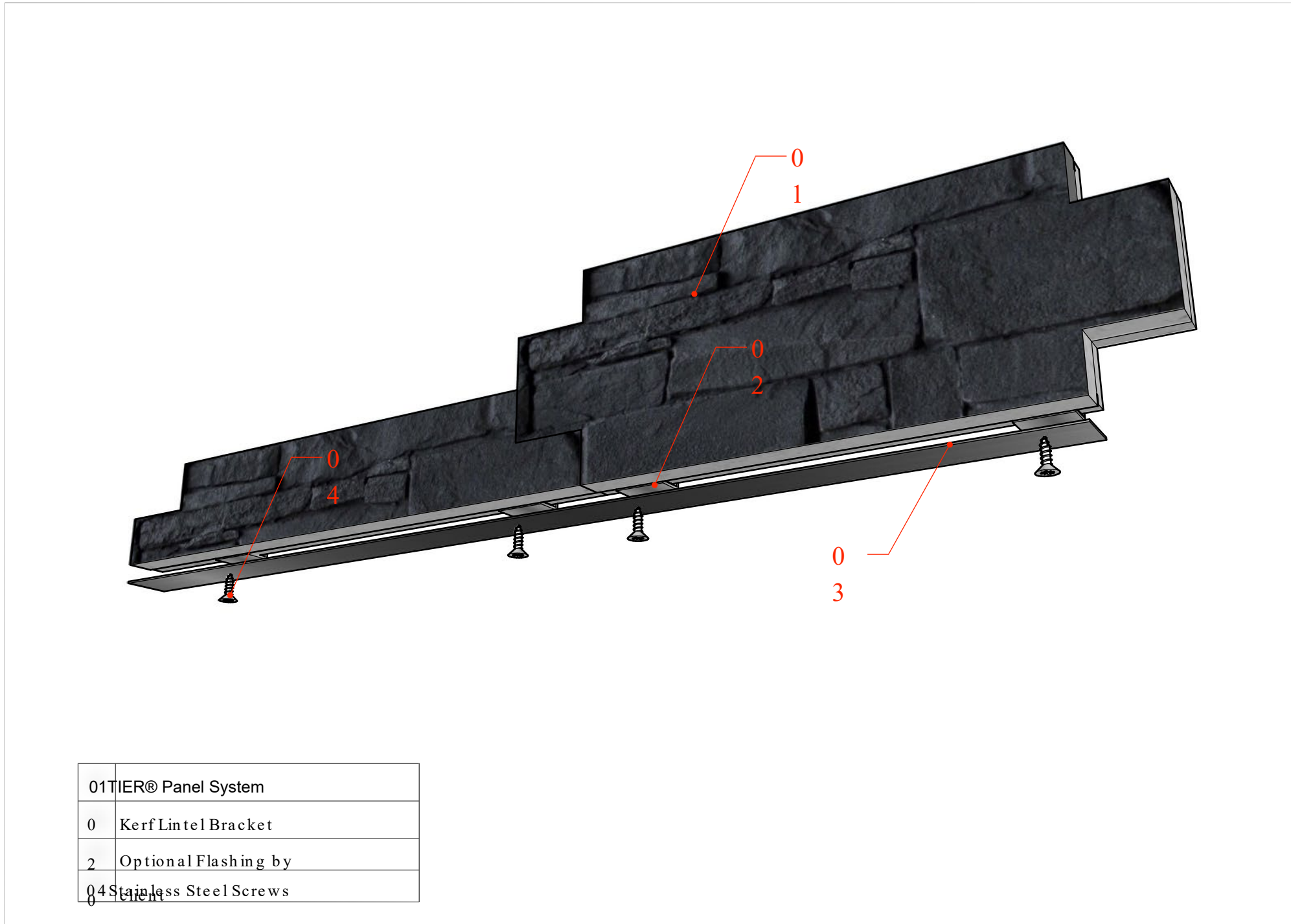
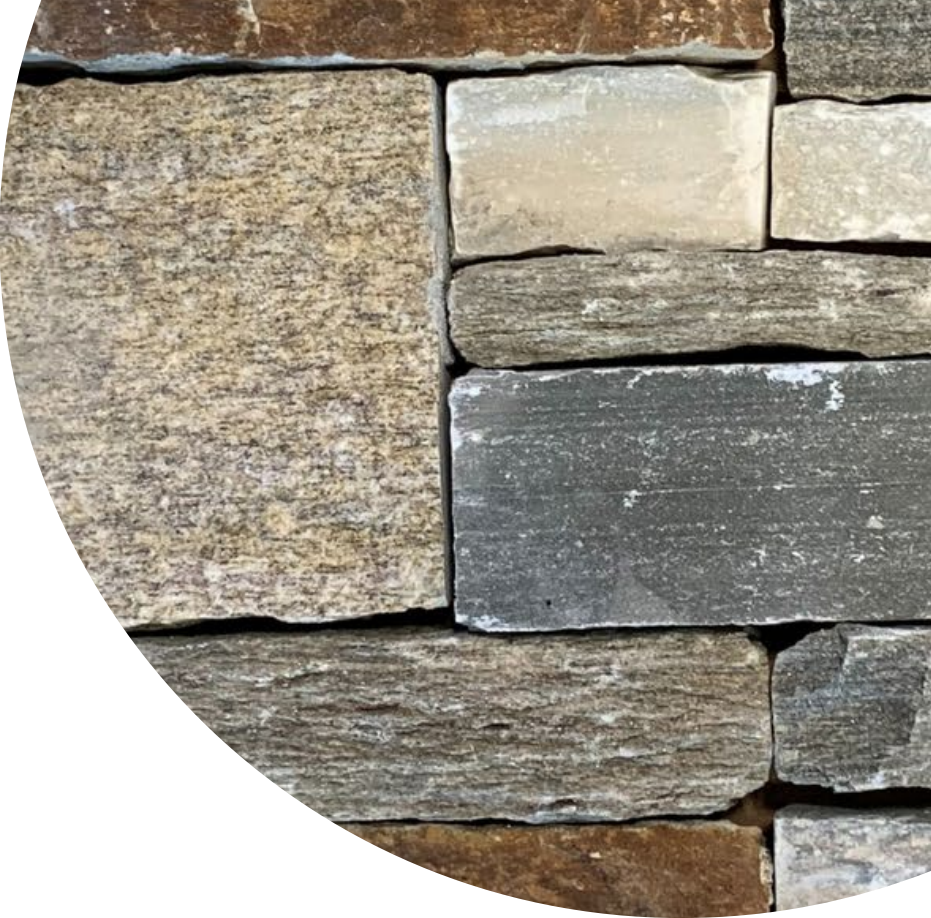
Technical Drawings - SFS System



Mechanical Install
SFS System

TIER® ULTRA

Technical Drawings



Mechanical Fixed Method -
Return / Doorway / Window

TIER® ULTRA

Selection of colours (Sahara, Irish Blend and Thin Black Slate available upon request)



Nordic



Rustic Granite

