

**Contact Us:**

**t: 01925 943 660**

**e: [info@architectural-facades.co.uk](mailto:info@architectural-facades.co.uk)**

**w: [architectural-facades.co.uk](http://architectural-facades.co.uk)**



## Why Sustainabrick®?

**Sustainabrick® is a brick slip cladding solution that offers customers both creative freedom and assured performance. Pick from almost any brick colour, texture, size or finish to complete your brick cladding facade.**

Backed by an Efectis fire test to BS 8414 (EUI-23-000759), the Sustainabrick Brick Slip Cladding is – text from certificate – . The system has also undergone CWCT sequence B tests for air-permeability, water penetration, wind resistance and impact resistance.

The slips themselves are manufactured in the UK by Monolith Brick & Stone, a carbon-neutral company (in accordance with BS PAS 2060 as per their CO2balance UK carbon offset certificate).

To provide further benefits to our customers, the Sustainabrick® system is as an external wall insulation (EWI) brick slip system and does not require cavities or fire barriers. Mineral wool is also used within the system build-up to achieve low U-values whilst keeping wall thicknesses to a minimum.







## Key Benefits



**Fire tested  
to BS 8414**



**An external wall  
insulation system**



**CWCT  
tested**



**Cured at ambient  
working temperatures**



**Carbon neutral  
brick slips**



**Any colour, texture  
or finish available**

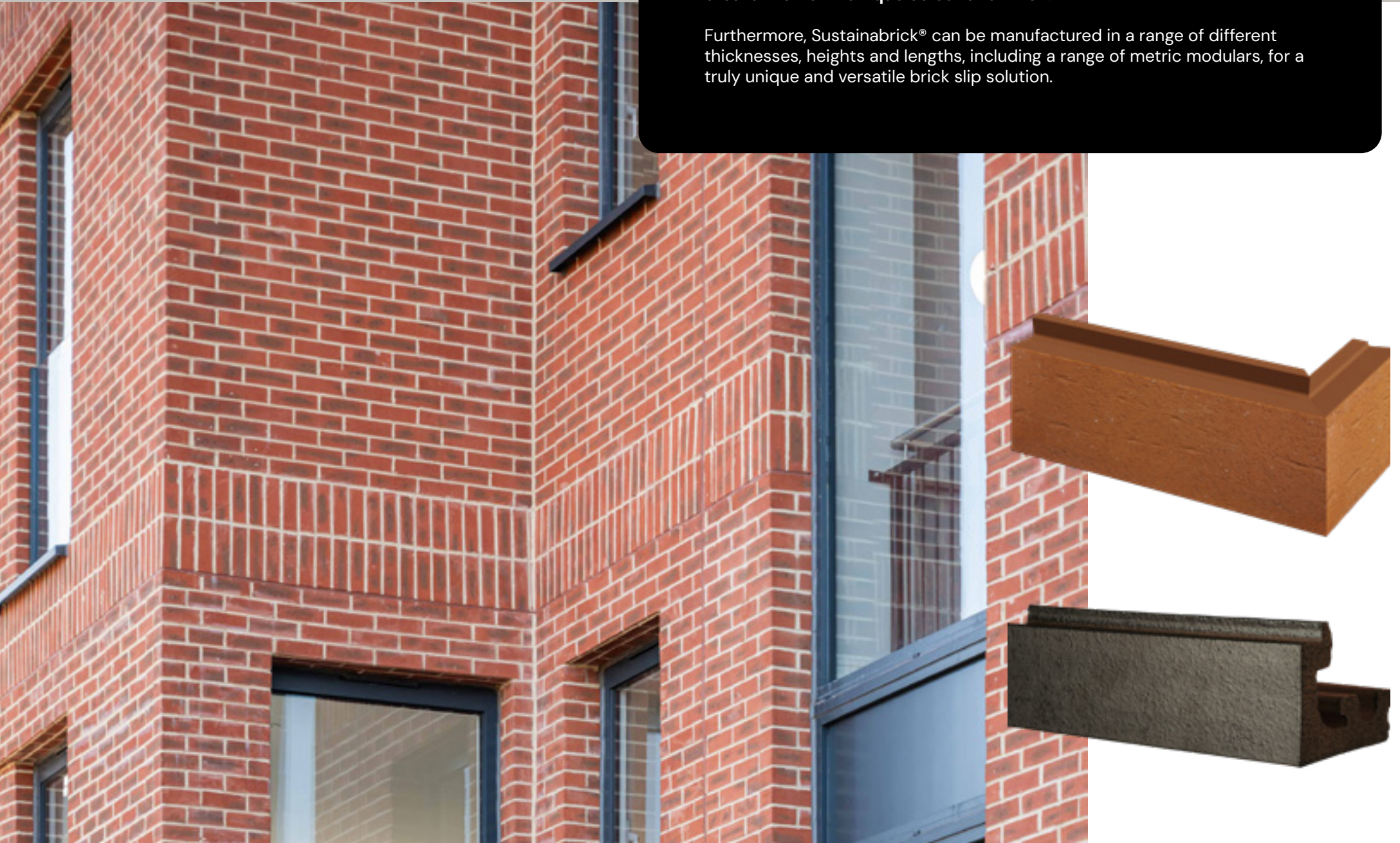


# Sustainabrick®

## Choose your brick slip

The Sustainabrick® system allows architects and specifiers the option to create their own unique colour and finish.

Furthermore, Sustainabrick® can be manufactured in a range of different thicknesses, heights and lengths, including a range of metric modulares, for a truly unique and versatile brick slip solution.







## Sustainable Brick Slips

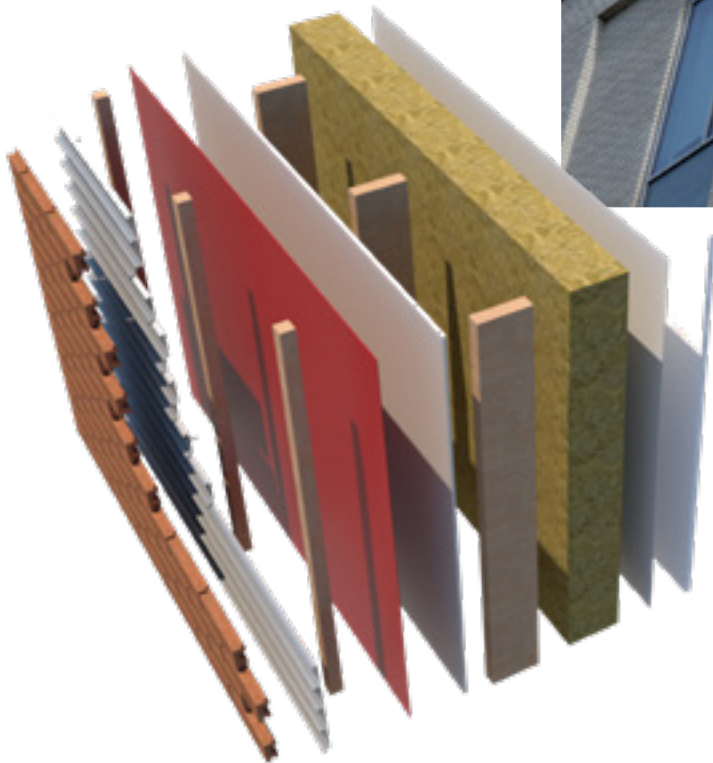
**As we move towards using more sustainable materials, we are proud to offer our customers a brick slip solution with great sustainability benefits:**

The Sustainabrick® slips are purpose-made to size, reducing waste that may be produced from cutting bricks down into slips. Once placed into moulds and embedded with a fireproof mesh, the slips are then cured at an ambient working temperature within 24 hours. This means no gas is required to fire or dry the bricks.

Due to the weight reduction provided by slips, one artic wagon can transport the equivalent of six artic wagons of bricks, therefore reducing transport emissions when delivering to site.

Sustainabrick® brick slips are all manufactured in the UK by Monolith Brick & Stone, a certified carbon-neutral company. Following delivery to site Monolith offers a service to recycle the packaging materials, reducing onsite waste.





## Installing Sustainabrick®

**The brick slips can be installed from scaffold mast climbers and can be fitted in any direction, even from top down if required.**

Panels are typically fitted to cement particle (CP) board, insulation, concrete or overclad to existing facades. Watertightness is achieved from the first pass of the adhesive used in the Sustainabrick system, allowing internal work to progress even if weather conditions bring external work to a halt. Our brick slip mortar is applied between the brick slips and adjacent panels to create a conventional brick finish.

The Sustainabrick® system does not require stainless steel support, even at height, which can save on costs.



## Testing

**The Sustainabrick® has been fire tested by Efectis to BS 8414 and is rated XXX.**

The system is also CWCT certified and has undergone sequence B tests for the following:

- Air-permeability
- Water penetration
- Wind resistance
- Impact resistance

For further testing and technical documentation, please get in touch.





## Glassworks, Manchester

Main Contractor : **Domis Construction**

Architect : **Jon Matthews Architects**

Project Sector : **Commercial**

Project Location : **Manchester**







**Bordering the trendy neighbourhood of Manchester's Northern Quarter, Glassworks, Back Turner Street is a new development of three interlinked buildings, providing high-end office space in a convenient location on the door-step of the city centre.**

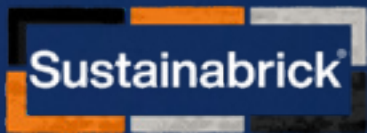
Starting in July 2021, the project was tasked with creating Grade A office space to meet the needs of modern working life.

It was incredibly important to all the project partners that the materials used were carefully considered, paying particular attention to the original glass bottle factory, whose facade was retained to sit in between the new 18 storey glass-fronted tower and a new glass and brick-slip fronted building.

Completed in December 2022, the new materials are sympathetic to the historic site and have contributed to it becoming a BREEAM excellent scheme.

The Architectural Facades team were excited to assist with the design and supply of the brick slip cladding, aluminium back structure and aluminium panels.





Stacey Shmygol

07494 119 291

[staceyshmygol@architectural-facades.co.uk](mailto:staceyshmygol@architectural-facades.co.uk)