

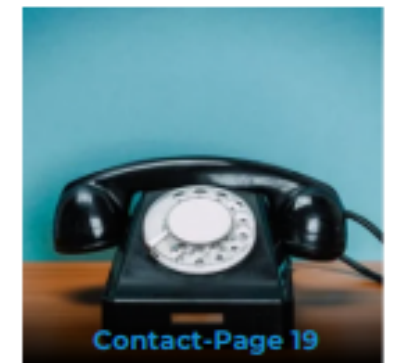
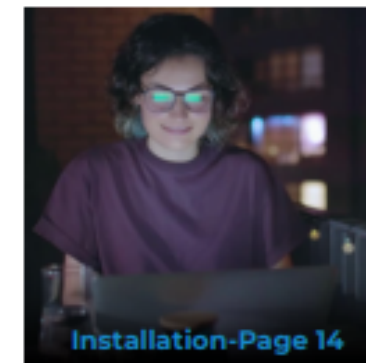
Architectural Facades  
**Skyeline**  
Balcony Range

## A New Horizon

Our mission for the Architectural Facades Skyline Balcony Range is to provide outdoor living space with a sustainability conscious approach.

The aims of this brochure are to present an overview of the unique features of the Architectural Facades Skyline Balcony Range, an introduction into the design options available, a summary of the production and installation methods, and outline the sustainable characteristics of the balconies and third-party testing.

Another aim of the brochure is to act as a conversation starter. With careful consideration of providing an outdoor space people desire for modern living and a sustainable approach to material use, combined with a vast array of bespoke design options, we are looking forward to discussing your next project with you.





## Why choose the Architectural Facades Skyeline Balcony Range?

Born out of a new strategic partnership between global metal specialists thyssenkrupp Materials Services UK, and Brickability Group PLC, the Architectural Facades Skyeline Balcony Range features cutting-edge technology, setting new standards in balcony design.

Skyedrain and Skyedeck, our patent-pending water drainage solutions, are fully integrated within our pioneering range, removing problems previously associated with balcony systems, such as poor water drainage, water penetration through the deck and stagnant water issues. The innovative Skyedeck channels the water to the edge of the balcony where the Skyedrain allows the water to drain out around the perimeter to the front of the balcony, omitting the need for drainpipes.

## What design options are available?

Our standard balcony has recyclable aluminium spindle balustrades, with alternative designs and materials in development, to align with your budget and design requirements. In addition, Juliette balconies, decked terraces and railings/balustrades are available within the range.

To complement any facade, we offer the highest quality of polyester powder coated paints in the full range of RAL colours, as well as anodised and anodic-look finishes. All finishes can be adapted to suit your project demands, including marine environments and bespoke requirements such as privacy screens. Balcony design can be discussed with our technical teams to suit your project specification.



**A space to think**



**A space to make  
memories**

## **What does the production process involve?**

Our bespoke series of metal extrusion dies are used by thyssenkrupp Materials Services to achieve an innovative and accurate balcony product. Using the highest quality aluminium, sourced from European mills, our bespoke profiles are transported to the UK for fabrication.

At thyssenkrupp, the inspection management software, iAuditor is used for all stages of production generating full digital traceability reports or a 'product passport' for each balcony produced.

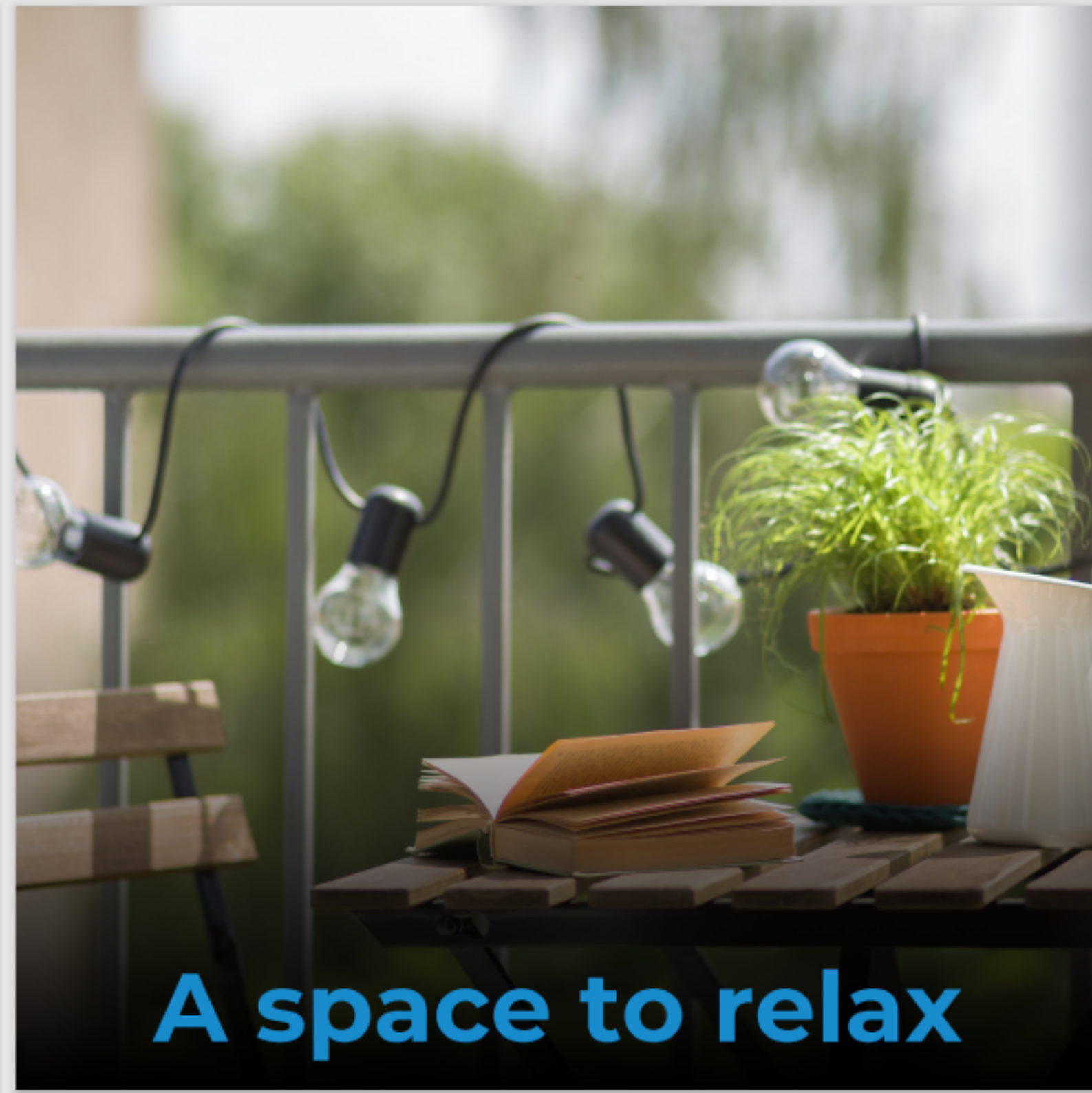
## What testing has been done?

The Architectural Facades Skyline Balcony Range meets the BS 8579:2020 guidelines for balcony design, engineering and performance.

The following tests were performed at VINCI, a UKAS accredited third-party facility:

- Line load testing (balustrade only)
- Uniformly distributed loading (whole balcony unit)
- Point loading (whole balcony unit)
- Impact testing (balustrade only)
- Rainfall water testing

A copy of the performance test certificate is available upon request.



**A space to relax**



**A space to breathe**

## Are the balconies environmentally friendly?

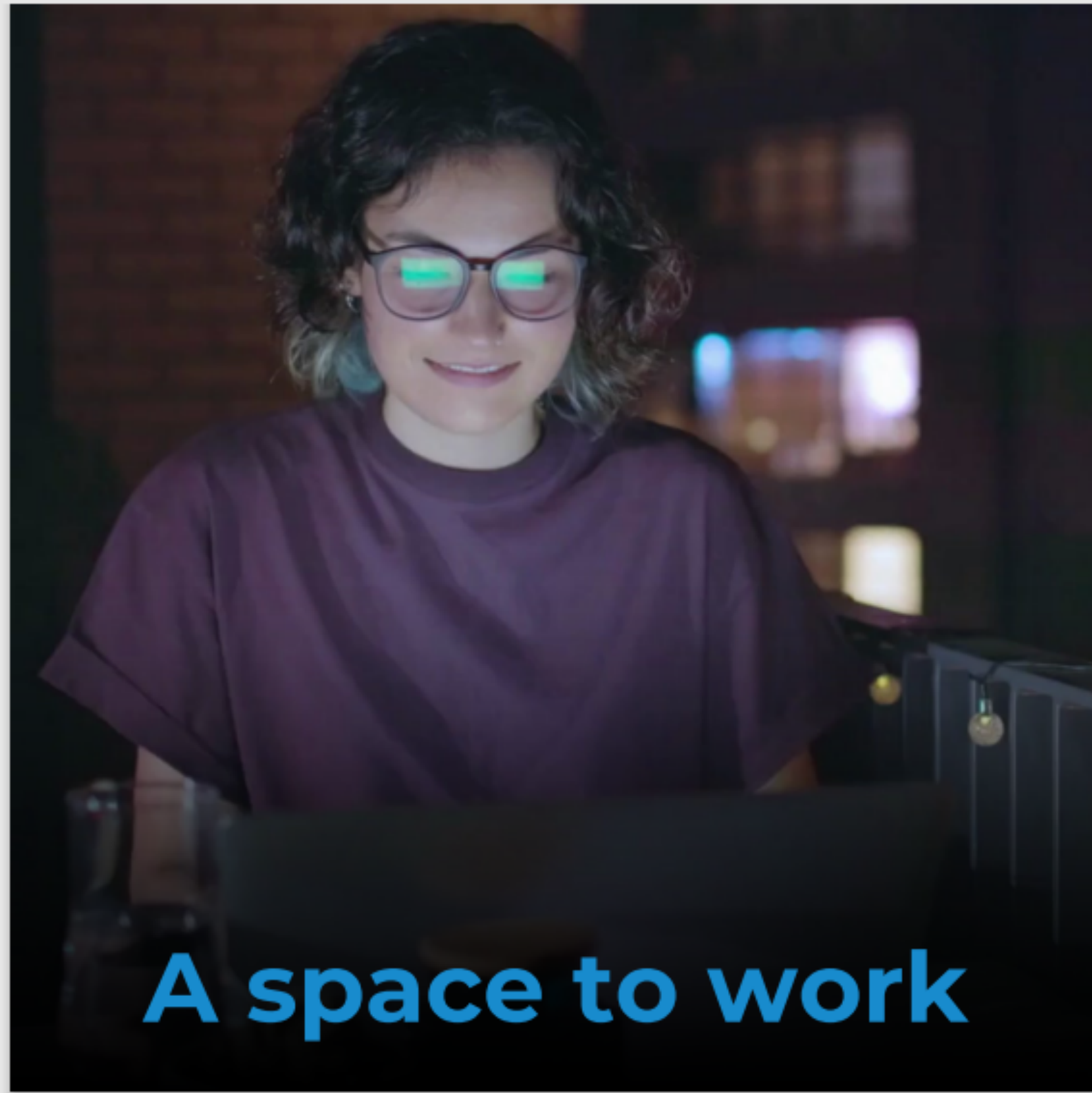
Made almost exclusively from recyclable aluminium, the systems are a durable and sustainable alternative for the planet. Using non-combustible materials that are also fully recyclable, allows us to significantly reduce weight and increase strength, in addition to carbon footprint savings.

Architectural Facades Skyline Balcony Range is an environmentally friendly option due to their high aluminium content. DNV-GL Certified by our raw material supplier according to ISO 14064, the aluminium used is also produced through renewable energy sources.

## How are the balconies installed?

The Architectural Facades Skyline Balcony Range has structural steel arms integrated within the chassis design, which are bolted to steel brackets. These brackets provide an extension accommodating the wall thickness without interfering with the progress of work on the external facade.

Our in-house structural engineer will oversee every project to approve all calculations. Following the design, fabrication and supply of the balcony system, we can either provide installation through our team of installers or we can recommend third-party installers.



**A space to work**





## What are the next steps?

From sunrise to sunset, the Architectural Facades Skyeline Balcony Range can provide much needed functional space to suit modern living.

Skyedrain and Skyedeck, our patent-pending water drainage solutions, are fully integrated within our pioneering range, removing problems previously associated with balcony systems.

The range is manufactured in the UK using recyclable European sourced aluminium and is available in a range of sizes and finishes to suit your project requirements. Please get in touch with a member of our team to discuss your project specification with us and obtain a quote.



**Tested and ready to go!**

## What's on your horizon?

Please contact us to discuss your next project and how we can help you provide a sustainable outdoor living space.

Architectural Facades  
Wilderspool Business Park  
The Brew House  
Greenall's Avenue  
Warrington  
WA4 6HL

w: [www.architectural-facades.co.uk](http://www.architectural-facades.co.uk)

t: 01925 943660

e: [Skyline@architectural-facades.co.uk](mailto:Skyline@architectural-facades.co.uk)





w: [www.architectural-facades.co.uk](http://www.architectural-facades.co.uk)  
t: 01925 943660  
e: [Skyline@architectural-facades.co.uk](mailto:Skyline@architectural-facades.co.uk)

Details provided are subject to changes. Last updated September 2023.