

# THE ART OF BRICK





D

DAKOTA

DAKOTA  
REUNITE

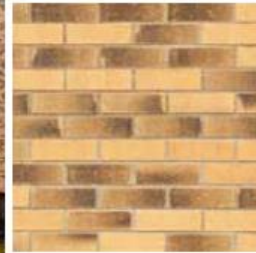
HOTEL



## OUR PRODUCTS



**CONSERVATION  
BUFF**



Dimensions 215 x 102 x 65mm  
Compressive strength  $\geq 70N$   
Water absorption  $\leq 7\%$   
Durability F2 S2  
Black flashed buff wirecut



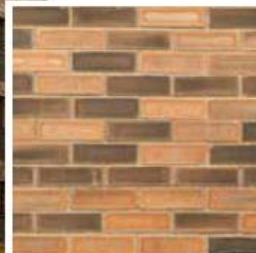
**SNOWIE  
HERITAGE  
DRAGFACED**



Dimensions 215 x 102 x 65mm  
Compressive strength  $\geq 85N$   
Water absorption  $\leq 5\%$   
Durability F2 S2  
Weathered Red Multi Wirecut



**SNOWIE  
HERITAGE  
SMOOTH**



Dimensions 215 x 102 x 65mm  
Compressive strength  $\geq 85N$   
Water absorption  $\leq 5\%$   
Durability F2 S2  
Weathered Red Multi Smooth



**CONSERVATION  
ARRAN**



Dimensions 215 x 102 x 65mm  
Compressive strength  $\geq 65N$   
Water absorption  $\leq 7\%$   
Durability F2 S2  
Purple flashed red multi wirecut

**CONSERVATION  
WEATHERED**



Dimensions 215 x 102 x 65mm  
Compressive strength  $\geq 70N$   
Water absorption  $\leq 7\%$   
Durability F2 S2  
Weathered light buff wirecut

**CONSERVATION  
SILVER GREY**



Dimensions 215 x 102 x 65mm  
Compressive strength  $\geq 70N$   
Water absorption  $\leq 7\%$   
Durability F2 S2  
Silver flashed light buff wirecut

**CONSERVATION  
AUTUMN BLEND**



Dimensions 215 x 102 x 65mm  
Compressive strength  $\geq 70N$   
Water absorption  $\leq 7\%$   
Durability F2 S2  
Hearted Oatmeal Buff Wirecut

**EDGEMOOR  
LIGHT**



Dimensions 215 x 102 x 65mm  
Compressive strength  $\geq 89N$   
Water absorption  $\leq 7\%$   
Durability F2 S2  
Silver flashed mid buff wirecut

**EDGEMOOR  
DARK**



Dimensions 215 x 102 x 65mm  
Compressive strength  $\geq 89N$   
Water absorption  $\leq 7\%$   
Durability F2 S2  
Black flashed mid buff wirecut

**CONSERVATION  
RED**



Dimensions 215 x 102 x 65mm  
Compressive strength  $\geq 65N$   
Water absorption  $\leq 7\%$   
Durability F2 S2  
Black flashed red wirecut



## OUR PRODUCTS



**NOMADE  
PARTIAL  
WHITE**

Dimensions 215 x 102 x 65mm  
Compressive strength  $\geq 40\text{N}$   
Water absorption  $\leq 8\%$   
Durability F2 S2

Sandfaced light buff with white flashing



**FUMOSA  
RUSTICA**

Dimensions 215 x 102 x 65mm  
Compressive strength  $\geq 40\text{N}$   
Water absorption  $\leq 8\%$   
Durability F2 S2

Rusticated Sandfaced Grey



**NOMADE  
RUSTICA**

Dimensions 215 x 102 x 65mm  
Compressive strength  $\geq 40\text{N}$   
Water absorption  $\leq 8\%$   
Durability F2 S2

Rusticated Sandfaced light buff



**MORIA**

Dimensions 215 x 102 x 65mm  
Compressive strength  $\geq 40\text{N}$   
Water absorption  $\leq 12\%$   
Durability F2 S2

Rusticated Sandfaced Black

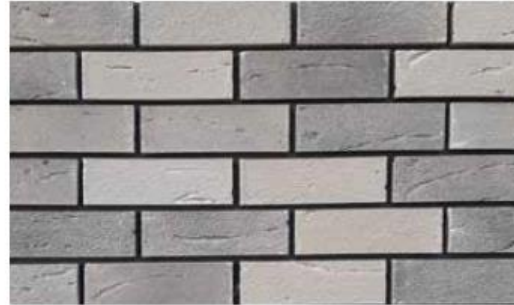
**FUMOSA  
MYSTIQUE**



Dimensions	215 x 102 x 65mm
Compressive strength	≥40N
Water absorption	≤8%
Durability	F2 S2

Dark Grey Multi sandfaced with black flashing

**NOMADE BLACK/  
WHITE ENGOBE**



Dimensions	215 x 102 x 65mm
Compressive strength	≥40N
Water absorption	≤8%
Durability	F2 S2

Black and White Engobed Sandfaced Light Buff Multi

**WILLIMEAU**



Dimensions	215 x 102 x 65mm
Compressive strength	≥40N
Water absorption	≤12%
Durability	F2 S2

Aged Red Multi Sandfaced

**NOMADE RUSTICA  
100% WHITE**



Dimensions	215 x 102 x 65mm
Compressive strength	≥40N
Water absorption	≤8%
Durability	F2 S2

Rusticated Sandfaced White Multi

**T17038 TAMBURO**



Dimensions	215 x 102 x 65mm
Compressive strength	≥40N
Water absorption	≤8%
Durability	F2 S2

Tumbled Light Grey

**AUTUMN  
BUFF**



Dimensions	215 x 102 x 65mm
Compressive strength	≥40N
Water absorption	≤8%
Durability	F2 S2

Warm Sandfaced Buff Multi



## OUR PRODUCTS



**INGLES  
RED**



Dimensions 215 x 102.5 x 65mm  
Compressive strength 45N  
Water absorption ≤6%  
Durability F2 S2  
Flashed Red Multi Smooth



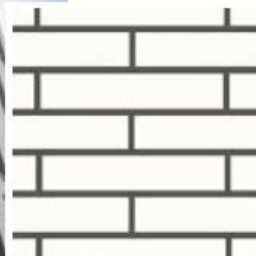
**TIMANFAYA  
BLUE**



Dimensions 215 x 102.5 x 65mm  
Compressive strength ≥45N  
Water absorption ≤6%  
Durability F2 S2  
Flashed Blue Black



**ARTICO  
WHITE**



Dimensions 215 x 102.5 x 65mm  
Compressive strength ≥45N  
Water absorption ≤6%  
Durability F2 S2  
Smooth White



**LANZAROTE  
BLACK**



Dimensions 215 x 102.5 x 65mm  
Compressive strength ≥45N  
Water absorption ≤6%  
Durability F2 S2  
Smooth Black



**TITAN  
MULTI**



Dimensions 215 x 102.5 x 65mm  
 Compressive strength  $\geq 20\text{N}$   
 Water absorption  $\leq 15\%$   
 Durability F2 S2  
 Grey Multi Textured Stock



**KINGSTON  
WEATHERED  
GAULT**



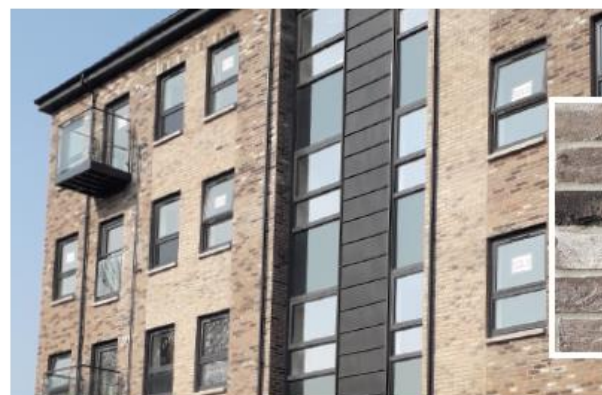
Dimensions 215 x 102.5 x 65mm  
 Compressive strength  $\geq 20\text{N}$   
 Water absorption  $\leq 15\%$   
 Durability F2 S2  
 Grey Multi Textured Stock



**ELGIN  
BLEND**



Dimensions 215 x 102.5 x 65mm  
 Compressive strength  $\geq 25\text{N}$   
 Water absorption  $\leq 17\%$   
 Durability F2 S2  
 Light Grey/Buff Textured Stock



**CORTES**



Dimensions 215 x 102.5 x 65mm  
 Compressive strength  $\geq 20\text{N}$   
 Water absorption  $\leq 15\%$   
 Durability F2 S2  
 Multi Grey/Black/White Textured Stock



## OUR PRODUCTS

### ASHTON



Dimensions 215 x 102.5 x 65mm  
Compressive strength  $\geq 40\text{N}$   
Water absorption  $\leq 6\%$   
Durability F2 S2  
Textured Dark Red Multi

### AVON



Dimensions 215 x 102.5 x 65mm  
Compressive strength  $\geq 40\text{N}$   
Water absorption  $\leq 6\%$   
Durability F2 S2  
Textured Warm Buff Multi

### BATH



Dimensions 215 x 102.5 x 65mm  
Compressive strength  $\geq 40\text{N}$   
Water absorption  $\leq 6\%$   
Durability F2 S2  
Smooth Buff

### BRECON



Dimensions 215 x 102.5 x 65mm  
Compressive strength  $\geq 40\text{N}$   
Water absorption  $\leq 6\%$   
Durability F2 S2  
Textured Light Buff

### CLIFTON



Dimensions 215 x 102.5 x 65mm  
Compressive strength  $\geq 40\text{N}$   
Water absorption  $\leq 6\%$   
Durability F2 S2  
Textured Red/Brown Multi

### PEMBROKE



Dimensions 215 x 102.5 x 65mm  
Compressive strength  $\geq 40\text{N}$   
Water absorption  $\leq 6\%$   
Durability F2 S2  
Textured Buff Multi

# NATURAL STONE FROM BRICKLINK

## OUR PRODUCTS



**BELLA ASHLAR  
SANDSTONE**



Density 2350Kgm-3  
Water Absorption 3.9%



**HERON MOOR  
ASHLAR  
SANDSTONE**



Density 2432Kgm-3  
Water Absorption 4%





#### Scottish Office

85 Keppochill Drive,  
Glasgow  
G21 1HX

Tel: 0141 286 3600

#### Leeds Office

Broadgate House,  
North Broadgate Lane,  
Horsforth,  
Leeds  
LS18 4AB

Tel: 0141 286 3600

[www.bricklink.co.uk](http://www.bricklink.co.uk)