



# The Architectural Facades Collection



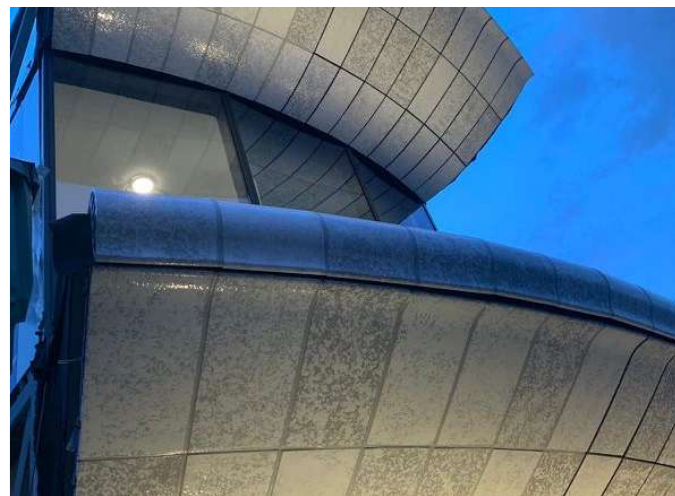


## On a Mission



Our mission is to provide **bespoke** and **exciting facades** that are admired and spark discussions between people in the local community, visitors to the area and colleagues in our industry. The aims of sharing some of the products available in our collection is to **inspire** you both in terms of what can be achieved, and as a conversation starter, because we are always looking to **push the creative boundaries** in providing custom-made showstopping solutions that meet the expectations of **your imagination**.

- Justin Price MD - Architectural Facades



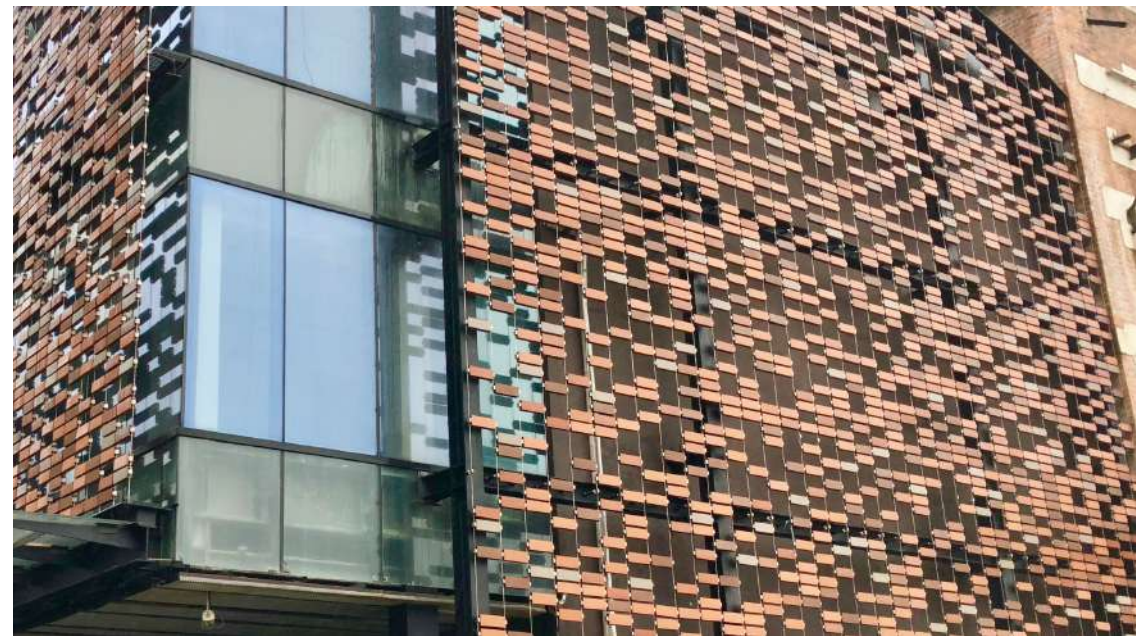


# Building a Brighter Future



Architectural Facades is proud to be a part of the Brickability Group PLC and is supported by a network of sales managers across the UK. Architectural Facades is involved in the design, manufacture, and supply of an extensive portfolio of cladding materials.

With over 40 years of collective experience, we have the skills, knowledge, and contacts to provide a bespoke service to meet the needs of your project.





# Delivering Our Mission



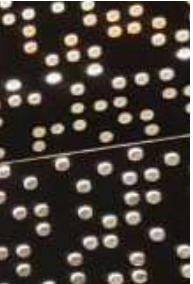
From our vast experience, we know that making your vision a reality requires careful planning and design. Our design services are covered by appropriate professional indemnity insurance of £5 million.

It's a team approach! We have the pleasure of working alongside some of the UK's top architects, contractors and developers. In addition, we have valued relationships with our suppliers and supply chain partners. The team at Architectural Facades is grateful for the strong working relationships that we have developed over the years.





# Mad for Metal



**Searching for aesthetically pleasing armour to clad your next project?**

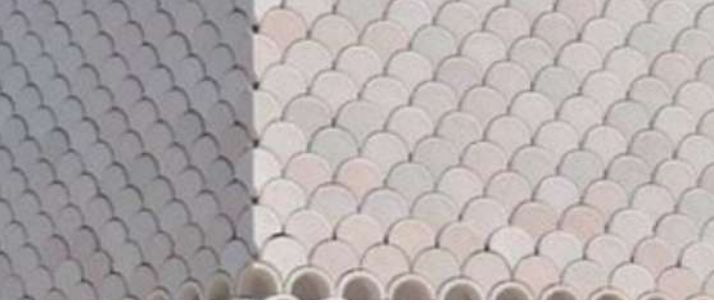
The chapter title, 'Mad for Metal' was inspired by Justin's roots in 'Madchester', hence the Mancunian spin! Once you see the variety of metal products we can design and supply, you'll see why we are mad for metal cladding and excited to show you what we can do!

If you are looking for extruded, perforated, expanded mesh or panels in aluminium to zinc, we can help. From commercial properties to car parks, we can design and supply bespoke solutions.



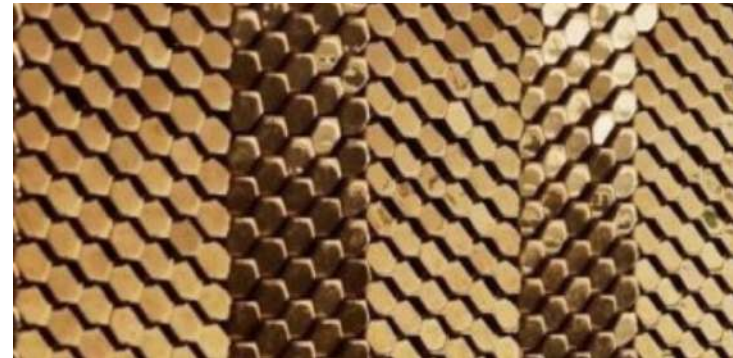
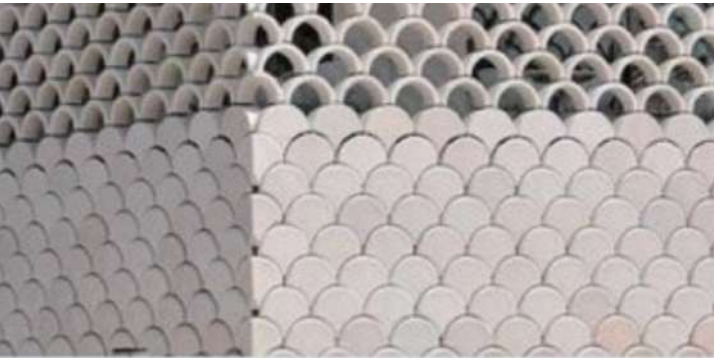
We have experience of designing and providing a vast range of panel types and finishes. The Architectural Facades metal panel collection currently includes perforated, expanded mesh, insulated, interlocking with seams and folded options. RAL colours and different finishes including stone powder and anodised options are available. For expanded mesh and perforated panels, we are proud to work with Italmesh.

We have copious cladding options available in our **Armourclad** range. However, we don't plan on stopping here. If you have an idea that you would like us to look at, please get in touch.



  
architectural  
FACADES

# Clay in a Different Way





## When you think about terracotta, what comes to mind? Orange rectangular tiles?

At Architectural Facades, we would like to show you alternative options using terracotta. With glazes available in a range of different colours, including metallic and pearlescent finishes, a vast range of shapes and sizes including customised cast and mosaic products, will you consider clay for your next project?

The **CN Terracotta** cladding system has a BBA certificate 23/6849 demonstrating an A1 fire rating in accordance with 96/603/EC, and the panels, rails and clips are made from materials that can be recycled.



# Slip of a Brick





## Looking for a brick facade but need a lightweight and sustainable alternative?

We've got you covered! Our **Sustainabrick** systems provide both a bonded fix and a mechanical fix solution.

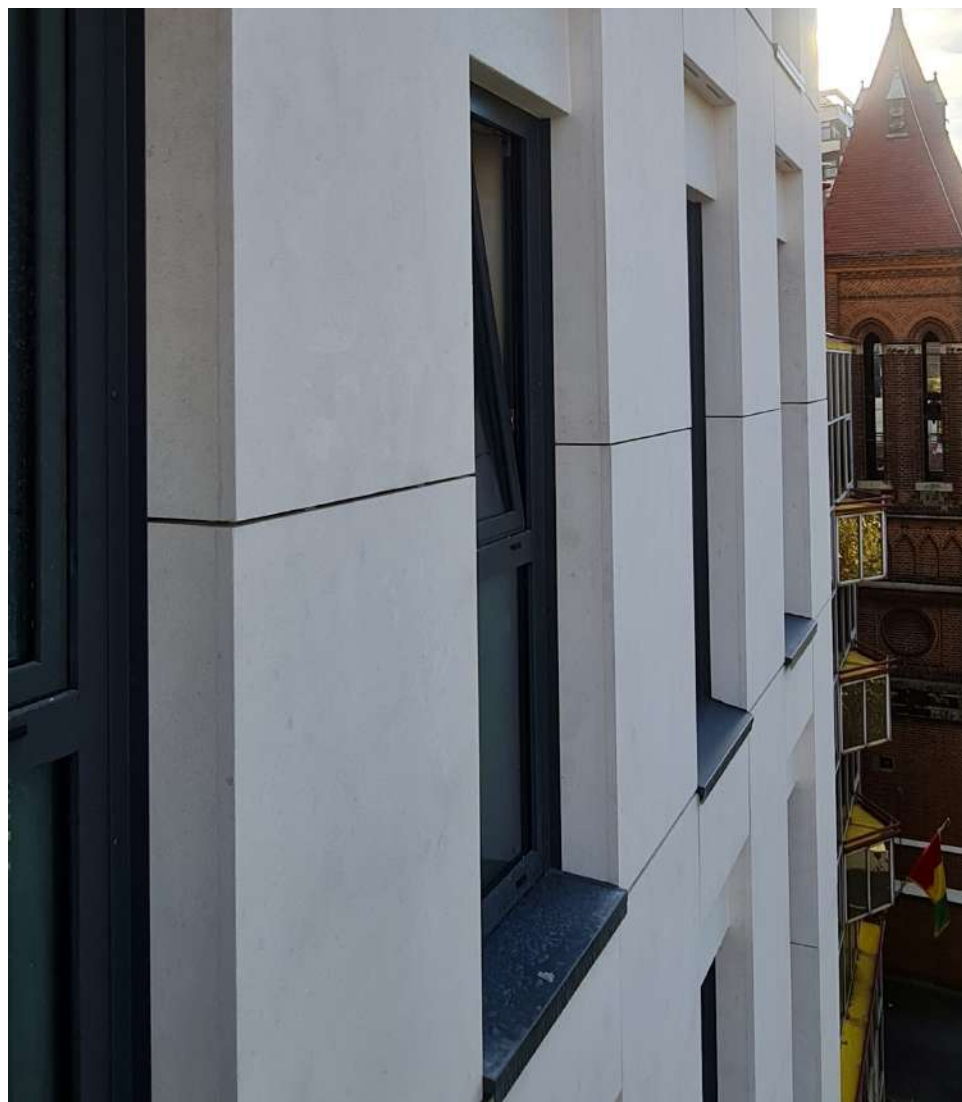
For the bonded fix system, a pre-populated carrier with mesh fused into 12 brick slips can be used with or without insulation. Multiple colours, textures and finishes are available, and we can match your client's preferred brick if required. Brick slips are produced by Monolith Brick & Stone Ltd, a carbon neutral company. The bonded Sustainabrick system has passed the BS 8414 fire test (EUI-23-000759) and is currently undergoing sequence B CWCT testing.





  
architectural  
FACADES

## Set in Stone





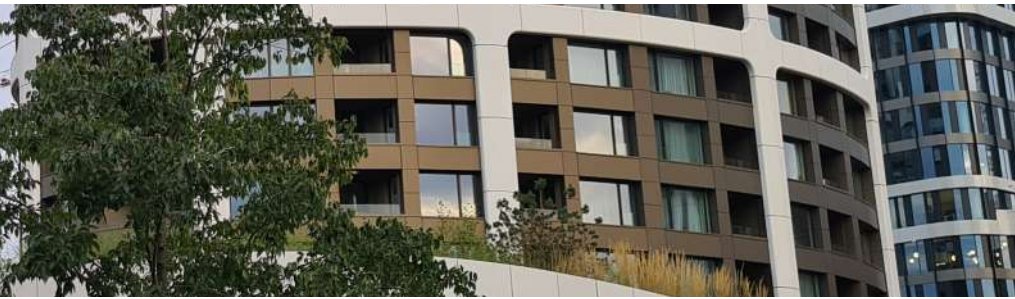
## Are you considering a stone facade?

From walling stone cladding to rainscreen stone cladding using modern methods of construction, to offsite fabrication of lightweight storey height stone panels, we have a vast selection of options to choose from in our **Torstone** range.

We work with quarries around the world to source stone cladding. Our materials are chosen to ensure your building has a natural finish to complement and harmonise with their surroundings.



## Cast in Concrete



### **Is it time to let your ideas run wild with GRC?**

Our range includes glass reinforced concrete (GRC) and ultra-high performance concrete (UHPC) cladding panels with an endless range of bespoke finishes, texture and colours, allowing your architectural ideas to run wild!

Owing to the lightweight nature of these materials, they can be used as a rainscreen, curtain walling or unitised facade. Corner panels, monolithic architectural elements and curved panels can be provided and there's an option of both secret fixed and face fixed.



## Class in Glass

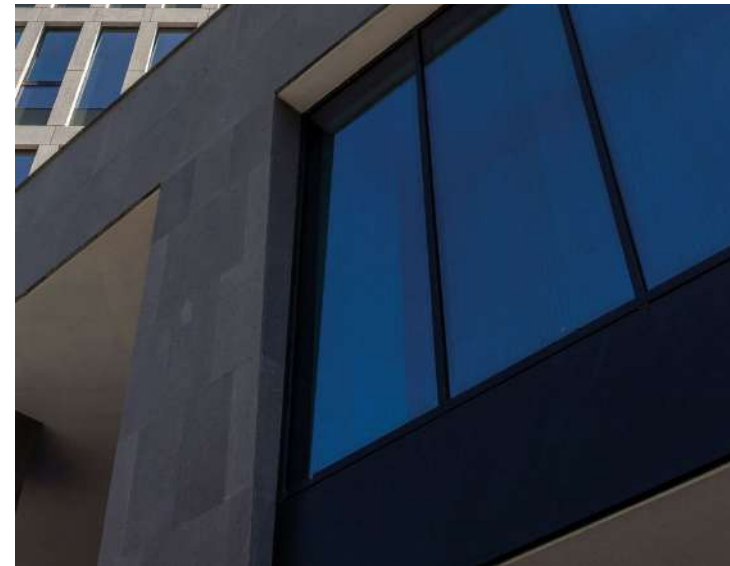


**Looking for a glass cladding solution that will float your boat and not temper your design?**

With a wide selection of colours and a choice of float or tempered glass, it can provide a solution which is ideal for any facade. Glass can be customised as screen printing is available upon request, and there are 30 standard colours and all available RAL colours to choose from. In addition, large format sizes and thin panels are available for your consideration.



# Ceramic Eye Candy



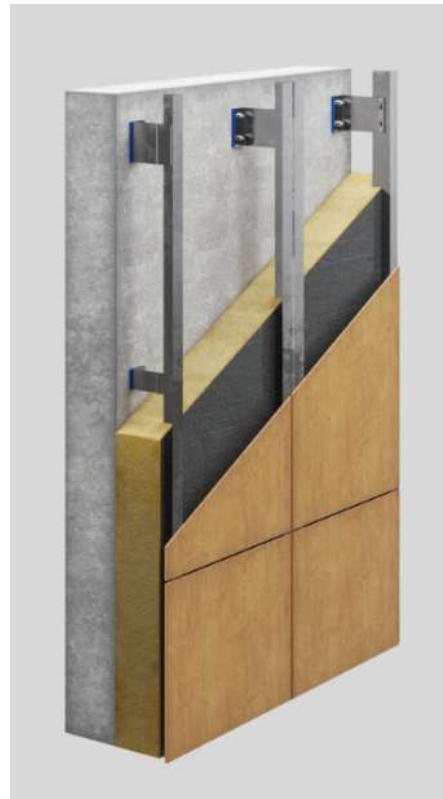
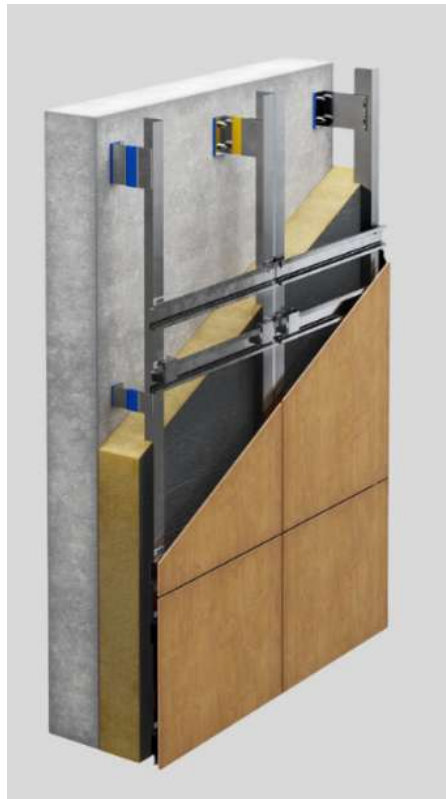
**Do you need directions to the Architectural Facades ceramic sweet shop?**

Ceramic offers a highly versatile and lightweight alternative to metal, natural stone, concrete and slate finishes, with bespoke choices available. In addition, you can choose from reflective, polished and glass options in terms of finish.

We describe it as a 'sweet shop moment' because the choice of colour, tone and texture is like being in a sweet shop surrounded by so many appealing options!



# Nuts and Bolts



## Will the fixings be a secret?

Secret or face-fixed, we can provide the nuts and bolts for any facade.

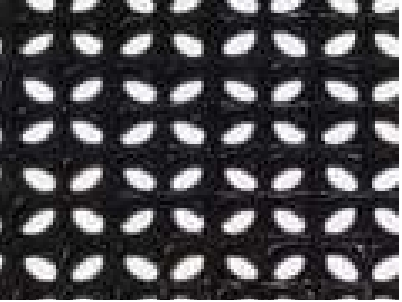
We offer a wide range of aluminium fixing systems for ventilated facades. Almost all cladding panels can be installed with this system. Should the need arise, we are able to design and produce individual non-standard solutions. All structural and engineering calculations are carried out to suit the project requirements.



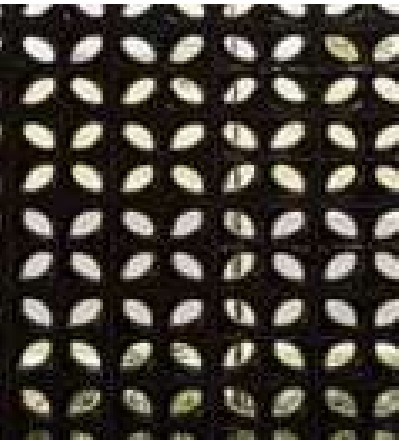
## Testing 1, 2, 3



The Architectural Facades Collection includes ranges of products from trusted manufacturers around the world. To ensure that these products comply with relevant standards, testing has been performed. Copies of certificates and test reports can be supplied (where applicable), on request.



## Next Steps



**Has something caught your eye? If so, please get in touch!**

We are a friendly bunch so if something has caught your eye, please don't hesitate to contact us.

Have you been inspired but cannot see exactly what you are looking for in this collection? Again, please get in touch. It's not possible to show all of the options we have available so book a call to discuss your ideas with a member of our team.



## **Architectural Facades**

Wilderspool Business Park

The Brew House

Greenall's Avenue

Warrington

WA4 6HL

w: [www.architectural-facades.co.uk](http://www.architectural-facades.co.uk)

t: 01925 943 660

e: [info@architectural-facades.co.uk](mailto:info@architectural-facades.co.uk)



We are grateful to our partner suppliers who have kindly provided permission to use images for marketing activities: CN Terracotta, ItalMesh, Monolith, GammaStone, BSP, Levantina, Tier and BB fiberbeton.



w: [www.architectural-facades.co.uk](http://www.architectural-facades.co.uk)

t: 01925 943 660

e: [info@architectural-facades.co.uk](mailto:info@architectural-facades.co.uk)

The information in this brochure is subject to change. Last updated March 2024.